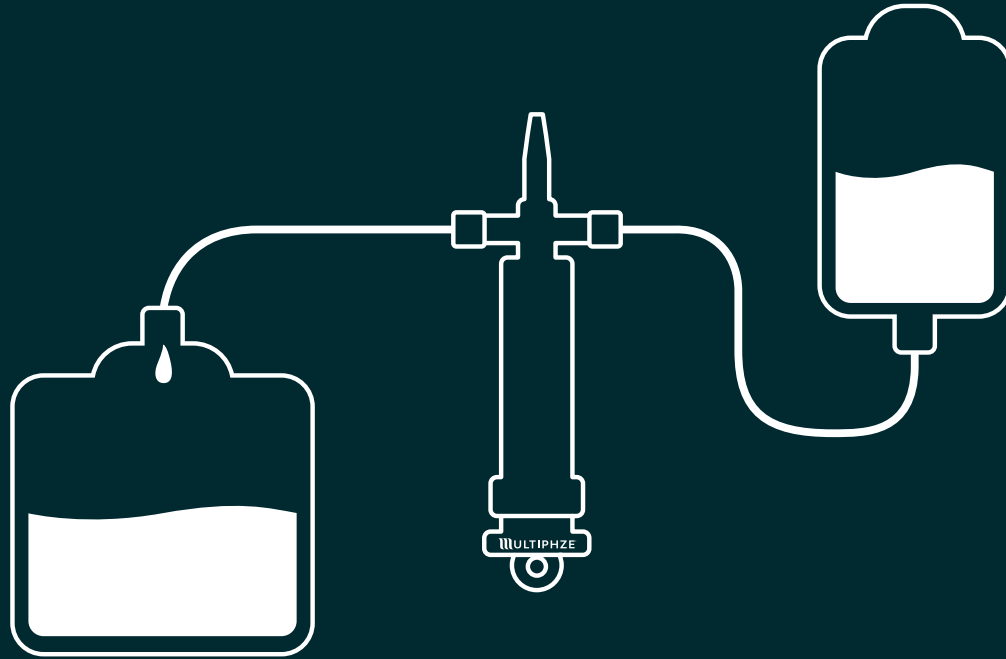


FILL • IRRIGATE • DRAIN

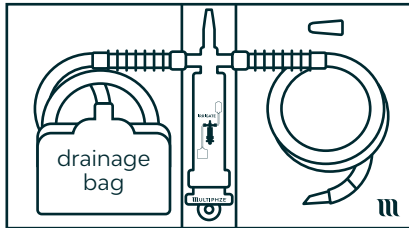


# MULTIPHZE®

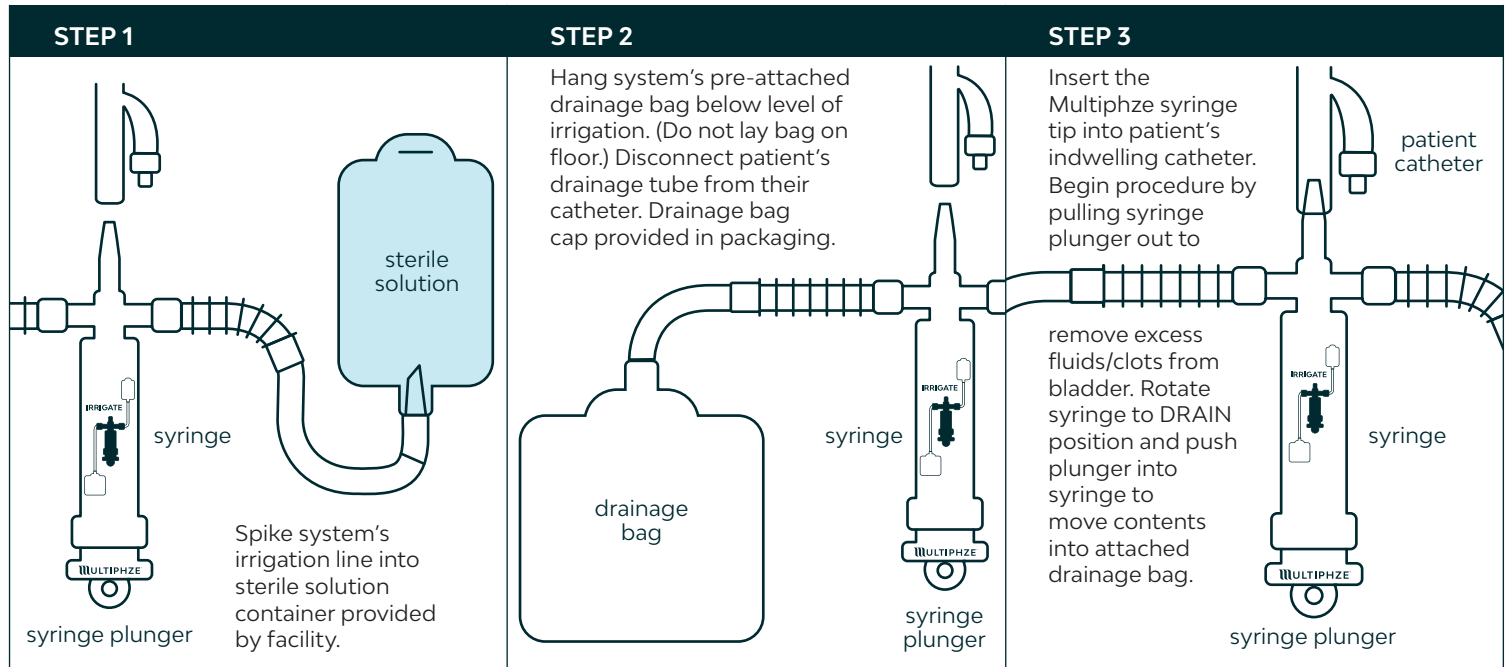
ENCLOSED BLADDER IRRIGATION SYSTEM



The Multiphze® Enclosed Bladder Irrigation System comes pre-packaged with its novel irrigating syringe in the IRRIGATE position and should be oriented as depicted here in preparation for procedure.

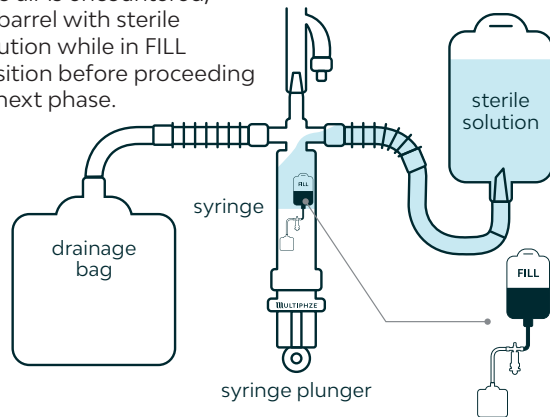


Irrigation Tubing is DEHP-free.



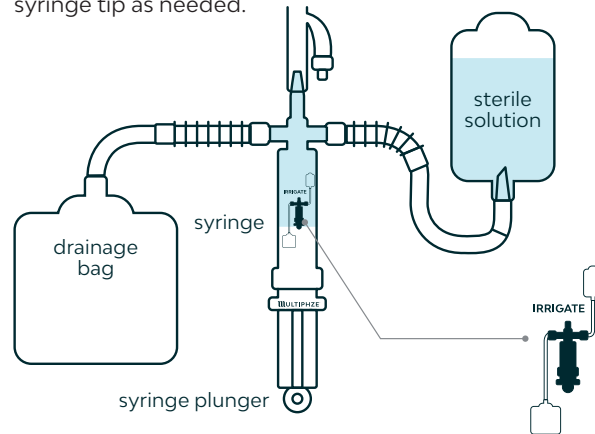
#### STEP 4: FILL PHASE

- Rotate Multiphze irrigating syringe to FILL position.
- Pull plunger back to fill syringe with sterile solution.
- If plunger feels stuck within syringe, simply push it forward and then pull it back to continue.
- If air is encountered during initial fills, then rotate immediately to DRAIN position and push plunger into syringe barrel to evacuate air into drainage bag.
- If no air is encountered, fill barrel with sterile solution while in FILL position before proceeding to next phase.



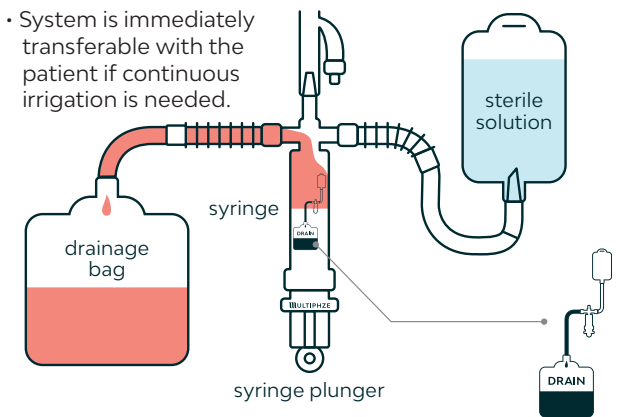
#### STEP 5: IRRIGATE PHASE

- Rotate syringe to IRRIGATE position.
- Push plunger into syringe to advance sterile solution into patient's bladder.
- Pull plunger back to draw out bladder contents into syringe.
- Manually irrigate bladder by pushing fluids back and forth through syringe tip as needed.



#### STEP 6: DRAIN PHASE

- To drain contents, rotate syringe to DRAIN position.
- Push plunger into barrel to empty syringe contents into attached drainage bag.
- Repeat STEPS 4 through 6 as needed to complete procedure.
- When procedure is complete, rotate syringe to OFF position before disengaging system from patient's catheter.
- System is immediately transferable with the patient if continuous irrigation is needed.



View full instructions at:  
[multiphze.com](http://multiphze.com)

**Rx** For use by medical professional only.

Use system per intended use in IFU. Avoid excessive forces when pushing or pulling fluids through syringe to prevent potential unintended injury to patient or damage to system that could cause it to leak.

Multiphze and Keep It Clean are registered trademarks of Multiphze, LLC. LBL-001 Rev C

**MULTIPHZE®**  
ENCLOSED BLADDER IRRIGATION SYSTEM